

Benchmark International

ACADEMIC MISSION -JAPAN 2026

*An International Exposure Program for Educators, Researchers
& Academic Leaders*

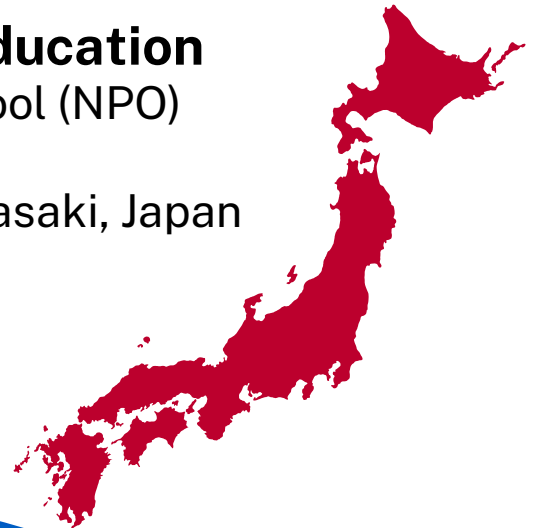
Featuring Participation in the

3rd International Congress on Education

Hosted by Kawasaki International School (NPO)

@Muza Kawasaki Symphony Hall, Kawasaki, Japan

26 – 31 January 2026





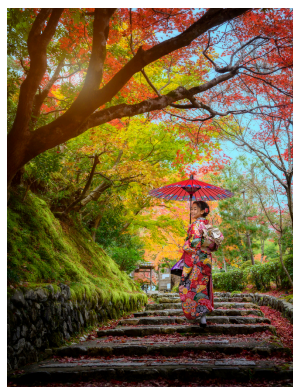
About the Academic Mission

The **Benchmark International – Academic Mission Japan 2026** is a premier outbound educational initiative for Nepalese educators, researchers, and institutional leaders seeking **global exposure, academic recognition, and professional growth**.

This six-day international mission combines participation in the **3rd International Congress on Education**, hosted by **Kawasaki International School (NPO)**, with structured educational and cultural visits across Japan.

Delegates will engage as **individual academic participants** within a global congress, presenting their papers and ideas alongside international educators. Beyond the congress, participants will experience Japan’s education system, sustainability practices, and cultural heritage — a living model of discipline, innovation, and respect.

Benchmark International will accompany and manage the delegation from Nepal, ensuring a smooth, enriching, and safe academic journey.





Purpose

This mission embodies Benchmark International’s belief that learning should transcend national borders.

Participants gain a practical understanding of educational excellence and cultural harmony, engaging with Japan’s world-class education and civic systems. The mission not only enhances academic credentials but also broadens professional perspectives on how inclusive, disciplined, and innovation-driven education shapes a nation.

Program Objectives

1. **Academic Engagement**
Empower educators and researchers to present and exchange ideas at a globally recognized education congress.
2. **Global Networking**
Build sustainable partnerships with educators, institutions, and policymakers worldwide.
3. **Experiential Learning**
Observe Japan’s education, sustainability, and governance models through guided site visits.
4. **Professional Development**
Strengthen leadership and intercultural understanding among educators and institutional leaders.
5. **Recognition**
Earn internationally acknowledged certificates and honors validating professional contributions to education.



Program Schedule

Day 1 Arrival in Japan

Delegates will depart collectively from Kathmandu, accompanied by Benchmark International representatives. Upon arrival in Tokyo or Kawasaki, participants will be assisted with immigration formalities and transferred to their hotel.

An evening orientation session will provide a cultural introduction and logistical briefing for the upcoming congress.



Kawasaki, Japan Skyline



Muza Kawasaki Symphony Hall



Muza Kawasaki Symphony Hall

Day 2 Congress Day 1 – Keynotes & Presentations

Venue: Muza Kawasaki Symphony Hall

Host: Kawasaki International School (NPO)

The 3rd International Congress on Education begins with an official opening ceremony, followed by keynote addresses by global education experts.

Throughout the day, participants will engage in paper presentation sessions and panel discussions addressing innovative teaching methodologies, global citizenship, and sustainable learning.

Delegates will have opportunities to share their own institutional practices and network with global peers and policy influencers.

Day 3 Congress Day 2 – Certification & Gala

Venue: Muza Kawasaki Symphony Hall
Host: Kawasaki International School (NPO)

The second day of the 3rd International Congress on Education continues with focused workshops, collaborative research exchanges, and thematic dialogues on education innovation.

The event concludes with the Certification & Recognition Ceremony, where distinguished participants will be awarded the Diploma of Honoris Causa & Medal.

The evening features a Cultural Gala Dinner, hosted by Kawasaki International School – celebrating international collaboration and cultural friendship.



Paper Presentation at previous program



Educators in Japan at GES 2024



Kawasaki Eco Gurashi Mirai-kan



Kawasaki City Educational & Cultural Center



Kawasaki Daishi Temple

Day 4 Educational & Cultural Visits

Location: Kawasaki, Yokohama

Delegates will explore Japan's educational and cultural ecosystem through guided visits to:

- **Kawasaki City Educational & Cultural Center** – studying Japan's model of inclusive education and digital integration.
- **Kawasaki Eco Gurashi Mirai-kan (Environmental Museum)** – understanding sustainability education and civic awareness.
- **Kawasaki Daishi Temple and Fujiko F. Fujio (Doraemon) Museum** – discovering how cultural identity and creativity influence Japan's approach to learning.

Day 5 Tokyo City Learning Experience

Focus: Urban education, civic discipline, and innovation in practice.

Visits include:

- **Tokyo Metropolitan Government Building Observation Deck:** Insights into public governance and policy transparency.
- **Shibuya Crossing & Hachiko Square:** Observing civic cooperation and social harmony in urban settings.
- **Meiji Shrine & Shinjuku Gyoen Garden:** Exploring mindfulness, environmental education, and cultural continuity.



Tokyo Metropolitan Government Building



Meiji Shrine



Tokyo International Airport (Haneda)

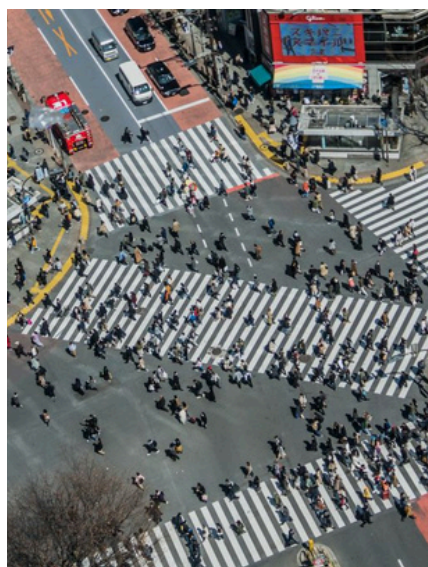
Day 6 Departure from Japan

After breakfast and hotel check-out, delegates will transfer to the airport for their return flight to Kathmandu.

Benchmark International's field team will ensure coordinated departure assistance and group facilitation.



Hachiko Square



Shibuya Crossing



Shinjuku Gyoen Garden



Recognition and Deliverables

At the conclusion of the mission, all participants will receive:

- Diploma of Honoris Causa & Medal (by Kawasaki International School, Japan)
- Congress Participation Certificate (endorsed by KIS Japan)
- Benchmark International Academic Mission Certificate of Completion

These recognitions validate the delegate's international participation, research presentation, and contribution to global education.

Who Should Join

This program is designed for:

- Educators, Professors, and Lecturers
- Academic Researchers and Scholars
- Institutional Heads and Academic Administrators
- Education Policy Professionals and Development Experts
- University and College Representatives seeking international partnerships

Delegates will gain practical exposure, professional recognition, and global perspectives to apply in their home institutions.



What Participants Can Do within This Academic Mission



01 Present Research and Academic Papers

Delegates will have the opportunity to present their academic papers, case studies, or institutional innovations during the Congress hosted by Kawasaki International School.



02 Engage in International Academic Dialogues

Participants can attend keynote sessions, workshops, and panel discussions led by global experts and scholars.



03 Explore Japan's Educational Ecosystem

Participants will visit schools, museums, and civic centers that embody Japan's approach to innovation, ethics, and sustainability in education.

Gain practical exposure to policies and practices that make Japan one of the world's most successful education models.



04 Build Global Professional Networks

The mission connects Nepalese educators with peers, administrators, and academic leaders from around the world.

Participants will form valuable professional and institutional relationships, opening opportunities for exchange programs, research collaboration, and future academic conferences.



The application process for the Benchmark International – Academic Mission Japan 2026 is simple, structured, and professionally managed. Interested educators, researchers, and institutional representatives can secure their participation by following the steps below:

🍀 How to Apply



01 Registration

Complete the official online registration form provided by Benchmark International with your personal and professional details.

Your application will be reviewed, and you'll receive a confirmation and acceptance email if eligible.



02 Application Fee

Confirm your participation by paying a minimal application fee of NRs. 50,000, which secures your position in the Nepal Delegation and initiates your registration process in Japan.

In case of visa rejection, 30% of the application fee amount will be deducted as administrative fees and will be refunded.



03 Invitation & Visa Preparation

After confirmation, you'll receive the official Invitation Letter and supporting documents from Kawasaki International School (NPO) and Benchmark International.

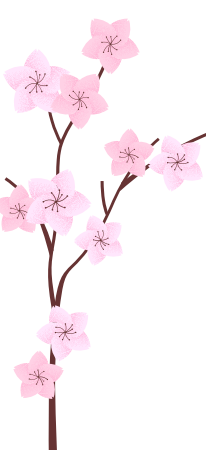
Prepare your visa application with guidance and required documentation. Apply for a Visa



04 Final Payment & Travel Preparation

Once your visa is approved, complete payment of the remaining package amount.

Benchmark International will issue your final itinerary, delegate handbook, and pre-departure briefing for group travel to Japan.



🌸 Official Program Package

Full Package – NRs. 330,000 (Early Bird) - Deadline December 15
NRs. 360,000 (Regular Price) - Deadline January 10

Includes:

- Round-trip airfare (Kathmandu–Tokyo–Kathmandu)
- Twin-sharing accommodation with breakfast
- Congress participation and certification
- Educational and cultural visits (4 days)
- Local transportation and logistics in Japan
- Airport pickup and drop in Japan
- Benchmark International team accompaniment and on-site facilitation
- Delegate coordination, travel assistance, and safety management throughout the program

Excludes:

- Visa processing and personal expenses, anything not mentioned in the inclusions.



🌸 Closing Reflection

The Academic Mission Japan 2026 is a living classroom — where culture teaches, systems inspire, and education transcends borders.

Delegates will not only represent Nepal on an international academic platform but also return home with renewed insight, creativity, and confidence to lead change in their own institutions.

With Benchmark International as your partner throughout this journey, every step — from Kathmandu to Tokyo and back — is carefully managed to ensure a safe, meaningful, and transformational experience.



SCAN HERE

🌸 **Interested? Scan the Registration Link and Sign Up Today**

Join the official Benchmark International Academic Delegation to Japan 2026 and represent Nepal in an international academic forum.



Contact Us

We're here to answer your questions and guide you through the journey of joining Academic Mission Japan 2026. Whether you're an educator, an Institutional Head, or an Academic Administrator, feel free to reach out to us.

Contact Information



Phone
+977-9823-220707



Email
info@benchmarkintl.com.np



Website
www.benchmarkintl.com.np

Follow Us



@benchmarknepal



@benchmarknepal



@benchmarknepal

Office Information

Benchmark International
Dillibazar-29, Kathmandu, Nepal

Office Hours

Sunday to Thursday: 9:00 AM – 5:00 PM
Friday: 10:00 AM – 2:00 PM
Closed on Saturdays and Public Holidays

Mailing Address

Dillibazar-29, Kathmandu, Nepal 44600



Scan To Register

Click Here >> [Registration Link](#)